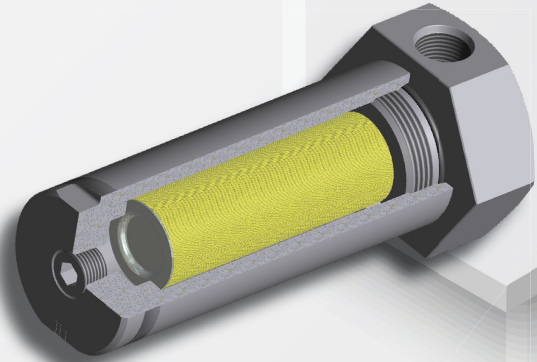


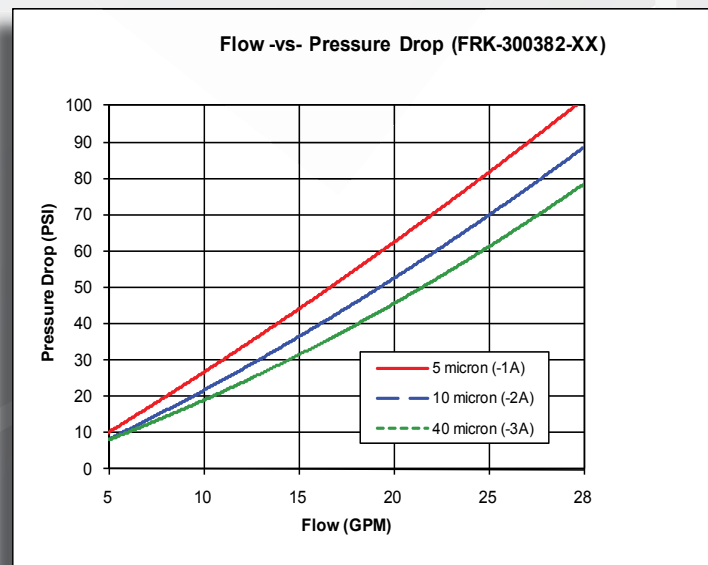
LOW PRESSURE FILTER

Product Specifications

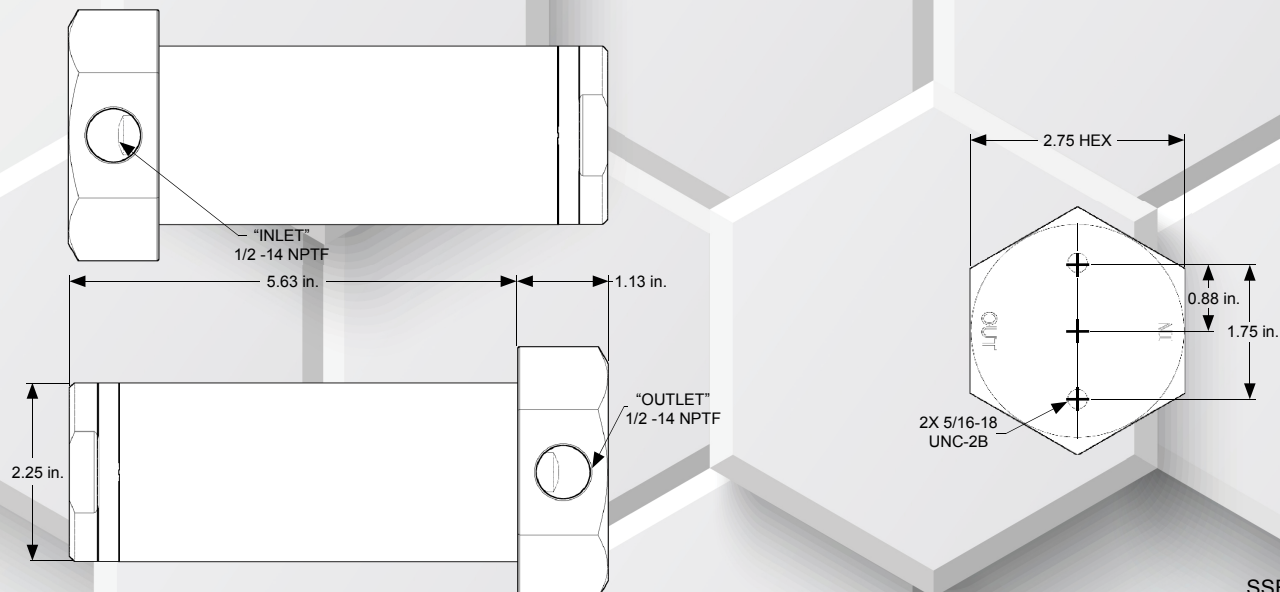
Housing:	Carbon Steel
End Caps:	Carbon Steel
Filter Medium:	Resin Impregnated Paper
Max. Working Pressure:	3000 psi (207 bar)
Max Allowable Pressure Drop:	2500 psi (172 bar)
Weight:	5.0 lbs. (2.3 kg)
Recommended Fluid:	Red hydraulic fluid (MIL-H-5606)
Inlet Connection:	1/2" NPTF
Outlet Connection:	1/2" NPTF
Replacement Filter:	FE-200575
Micron Rating:	40



Also offered with
SAE connections
KTI Part Number:
FRK-308294



General Dimensions



SSFRK3003823A_C